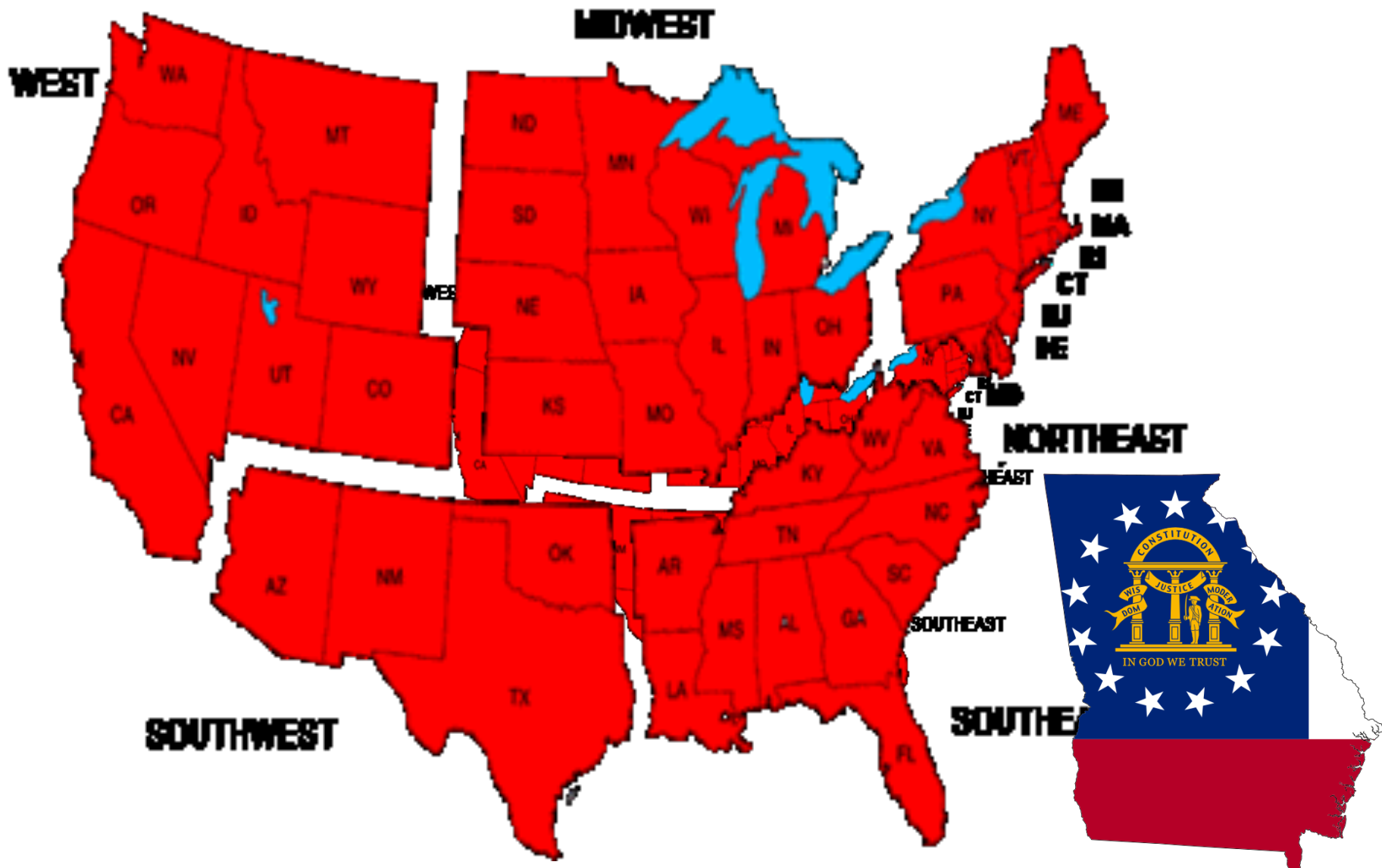


# Appalachian Trail District Round Table

Local “semi” high adventure



**T 316 Euharlee Creek Outfitters**  
**102 Covered Bridge Road**  
**Euharlee, Georgia**  
**770-607-1846**

<https://www.euharleecreekoutfitters.com/>





## Georgia







HOME

ABOUT

FLOYD'S  
LANDING

RESERVE  
EQUIPMENT

TRIPS AND  
RENTALS

CONTACT &  
HOURS



EUHARLEE CREEK OUTFITTERS KAYAK, CANOE, TUBE RENTALS



# Providence Canyon State Outdoor Recreation Area

## T8880 Lumkin Ga

<http://gastateparks.org/ProvidenceCanyon>



Georgia's "Little Grand Canyon" is a testament to the power of man's influence on the land. Massive gullies as deep as 150 feet were caused simply by poor farming practices during the 1800s, yet today they make some of the prettiest photographs within the state. The rare Plumleaf Azalea grows only in this region and blooms during July and August when most azaleas have lost their color. The canyon soil's pink, orange, red and purple hues make a beautiful natural painting at this quiet park.



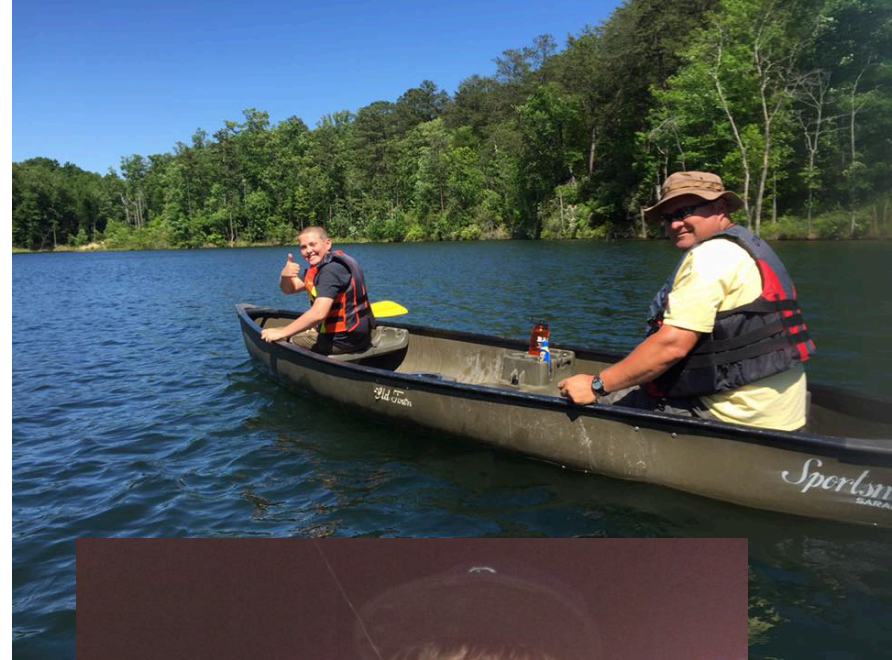
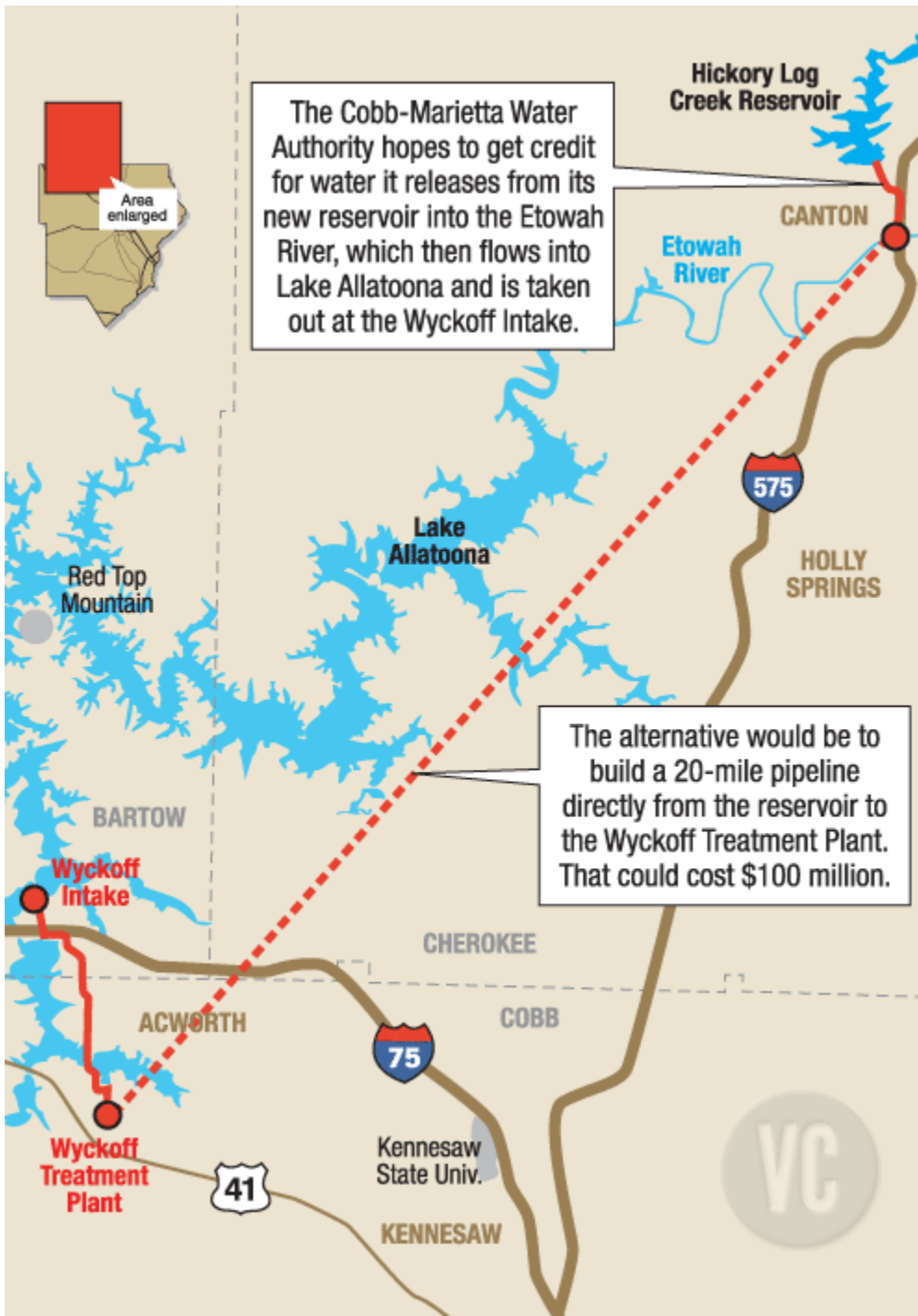


Near By Fishing Paddling Community

# Hickory Log Reservoir







# Etowah River Hiking Trails





- 
- ETOWAH TRAIL & SUTTALLEE TRACE POCKET WILDERNESS**
- PEDESTRIAN NATURE & HISTORIC TRAILS**
- BSA TROOP 241 – SCOUTS CANTON, INC.**
- CHEROKEE COUNTY BICENTENNIAL PROJECT SINCE 1976  
NATURE & HISTORIC TRAILS FOR FOOT TRAVEL ONLY
- WHITE BLAZED "TRACE" TRAIL  
— OTHER TRAILS—COLOR MATCHES TRAIL BLAZES  
— HISTORIC 1800'S CANTON-SUTTALLEE "TRACE" ROUTE
- UNDER CURRENT CORPUSONR RESTRICTIONS "TRACE" TRAIL ENDS AT JUG / ROCK CREEK JUNCTURE. REQUESTS FOR BRIDGES ARE LIKEWISE NOT APPROVED. HISTORIC MT. CARMEL ROAD MAY BE WALKED BY PUBLIC TO COUNTY GREENSPACE PROPERTY, AND TO HISTORIC IRON FURNACE RUINS ON SHOAL CREEK
- LEGEND:**
- = START/FINISH
  - = Aid Station
- SCALE IN MILES:** 0 1/8 1/4 3/8 1/2
- DATE: 6-26-13**  
DRAWN BY: BSA TROOP 241-SCOUTS CANTON, INC.
- ALL CORPS LAND IS MANAGED BY DNR AS A WILDLIFE MANAGEMENT AREA. WEAR ORANGE CLOTHING DURING HUNTING SEASONS.**
- Map Labels:** PRIVATE, RAMBLEY TRAIL ROAD, IRON FURNACE, NATIONAL CEMETERY, SHOAL CREEK, U.S. CORPS OF ENGINEERS, CHEROKEE COUNTY GREENSPACE, ETOWAH RIVER, ETOWAH TRAIL, SUTTALLEE TRACE, OLD SHOAL CREEK TRAIL, TELLOP TRAIL, ROCK CREEK TRAIL HEAD, SNOW CREEK ROAD, BOLING PARK, BOLING PARK TRAIL HEAD, CHEROKEE HIGH SCHOOL, MARIETTA HIGHWAY, HWY 140 TO WALESKA, RIV PA YMC.

# Pickens County Sportsman Club



<http://www.pcsc.us/>



739 Old Jones Mountain Rd E  
739 Old Jones Mountain Rd E, Talking  
Rock, GA 30175



## Youth Groups

It is the purpose and scope of the youth shooting sports program held at Pickens County Sportsman's Club to foster education, training, sportsmanship and character as well as develop responsible firearms handling and ownership. We volunteers in the youth program instruct all youth in the various shooting sports. Further it is done in conjunction with the completion of B.S.A. Merit Badge requirements – Venture Crew and Ranger programs as well as other youth programs such as N.R.A. Youth shooting – the JCs – Young Marines – Trail Life and Heritage Girls – as based by each group having distinctive accomplishment requirements.

Contact Joe Collins [CSRO@PSCS.US](mailto:CSRO@PSCS.US) to schedule activities

Camp at one of our two campsites



Wobble Trap practice

Small-bore and shotgun merit badge shoots

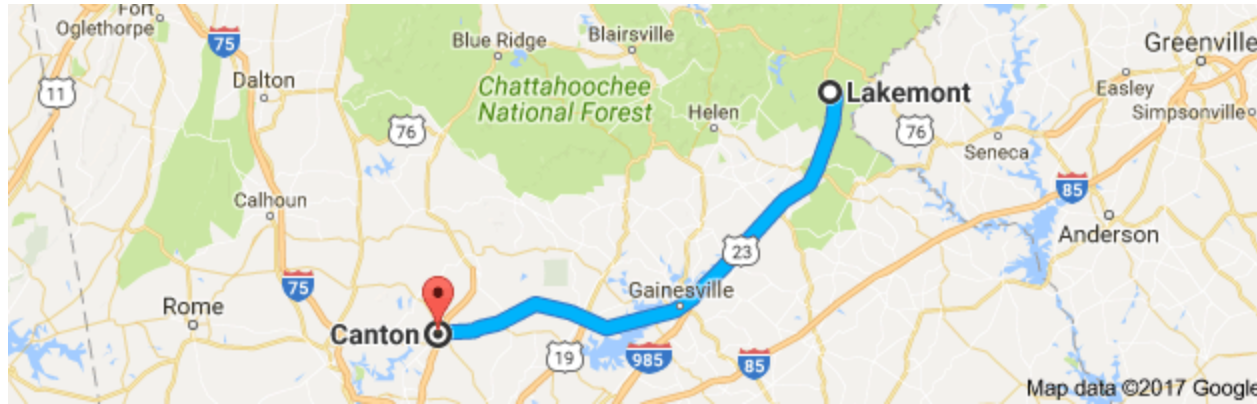


# Lake Seed





# Lake Seed.... Camping. Canoeing. Dam. Fishing. Swim Area.



Under 2 hours



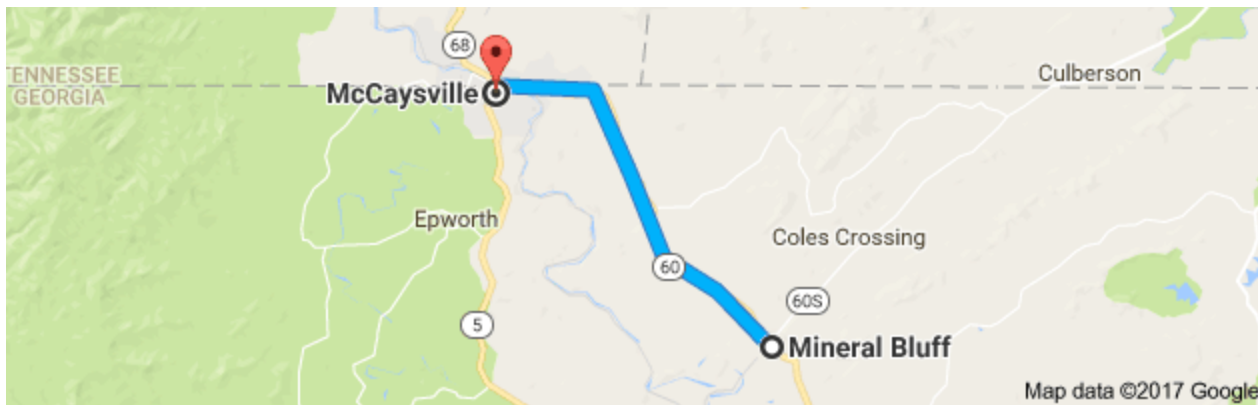
# 1 Troop = 2 rafting options

<https://www.rollingthunderriverco.com/rolling-thunder-river-trip-prices.cfm>



Group A (Alpha) will be doing the Ocoee River (moderate white water) and will be getting on the river in McCaysville, GA  
Group B (Bravo) will be doing the Hiawassee River (Calmer waters) and will be getting on the River in Reliance TN





## **Jonica Gap Campground OPEN YEAR ROUND**

**1474 Haygood Road  
Mineral Bluff, GA 30559  
706.374.5465**

[Email](#)



# Falls of Cherokee

## History. Fun. Close. Adventure



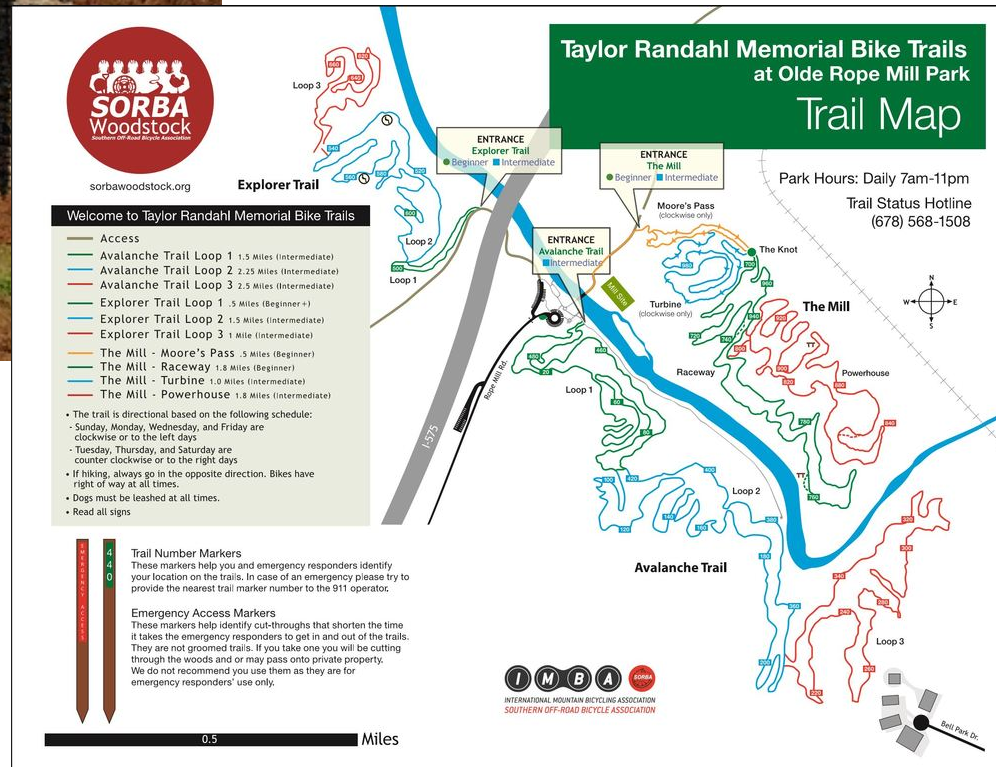
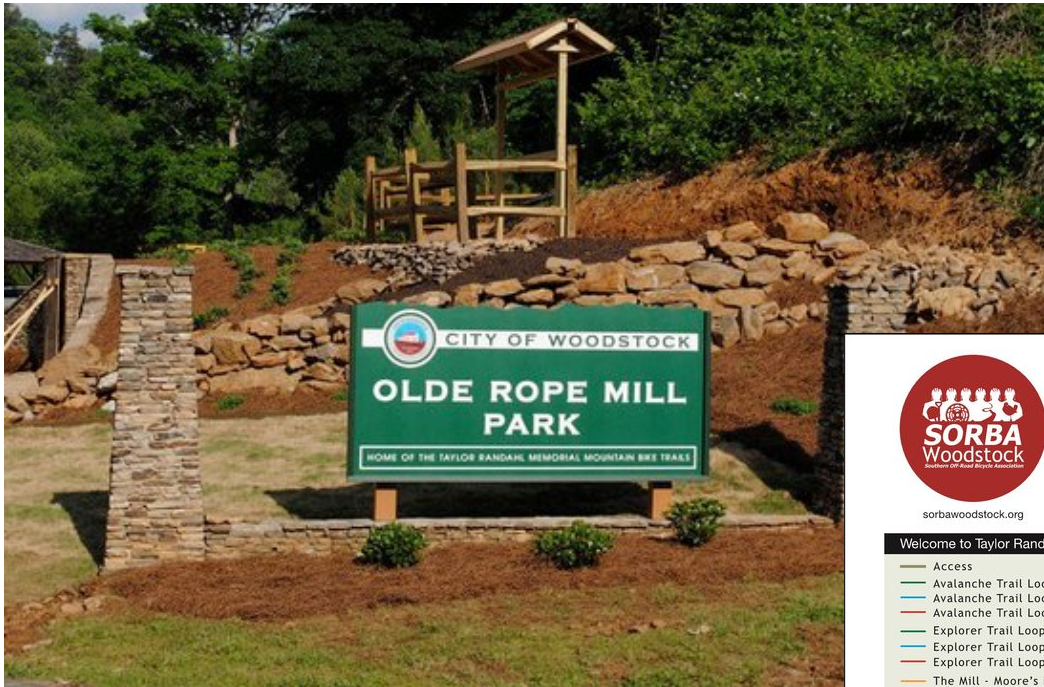


# Rope Mill





# Bike. Hike. Paddle. Fish. Stories of milling rope for gold.





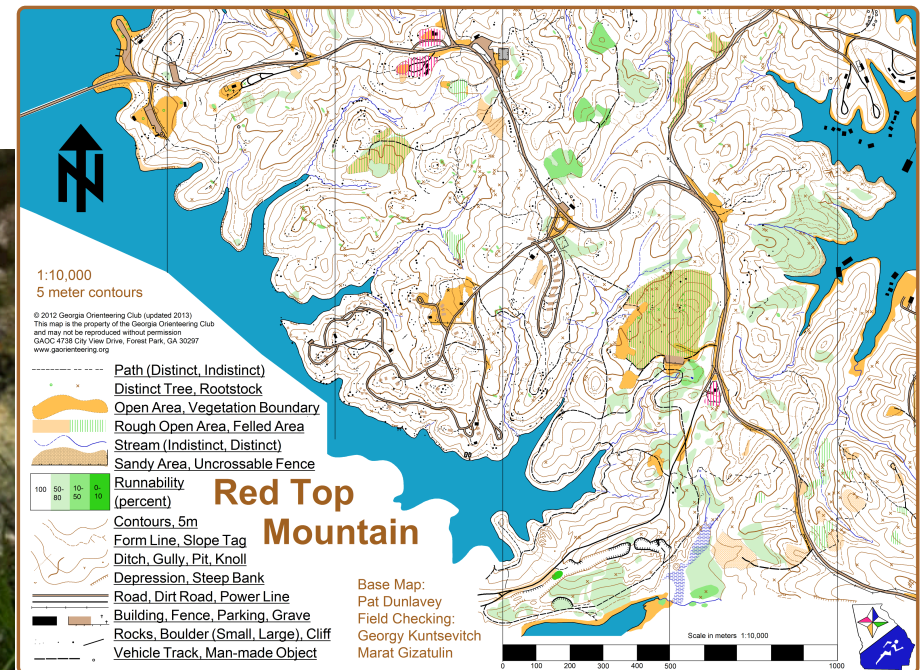
# Canton Gold Mines



Map of Gold Deposits in Georgia

# Orienteering Redtop Mountain

**Quick Description:** The Georgia Orienteering Club offers a permanent orienteering course at Sweetwater Creek State Park in Cartersville, Georgia, USA.



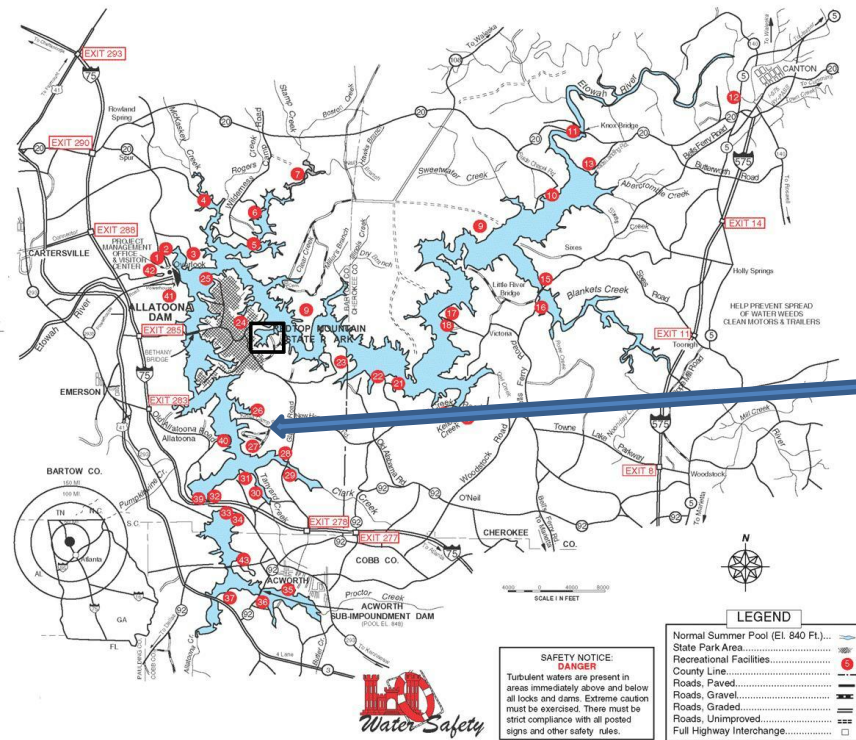


# Windy Watters Cartersville on Allatoona





Right out 20.  
Campfire ring.  
Chapel.  
Flushable toilet.  
Scout Friendly.





# Additional Locations

- National infantries museum <http://nationalinfantrymuseum.org/>
- Hollis Q. Lathem Reservoir <http://ccwsa.com/reservoir/>
- *Pine Mountain Trail* <https://www.atlantatrails.com/hiking-trails/hiking-pine-mountain-in-cartersville-georgia-allatoona-lake-vistas/>
- Garland Mountain Sporting Clays <http://garlandmountain.com>
- Chickamauga and Chattanooga National Military Park <https://www.nps.gov/chch/index.htm>
- Redtop Mountain Iron Pour <http://gastateparks.org/info/118001>
- University of the South <http://www.sewanee.edu/>
- Atlanta Yacht Club / Sailing <http://www.atlantayachtclub.org/>
- Amicalola Falls <http://www.amicalolafallslodge.com/accomodations/campsites/>
- [Cohutta Fisheries Center - Warnell - University of Georgia](#)
- Big Canoe Fishing
- AT Trail Ice water Spring Shelter
- [Tennessee Gap to Cowrock Mountain: Appalachian Trail - Atlanta Trails](#)